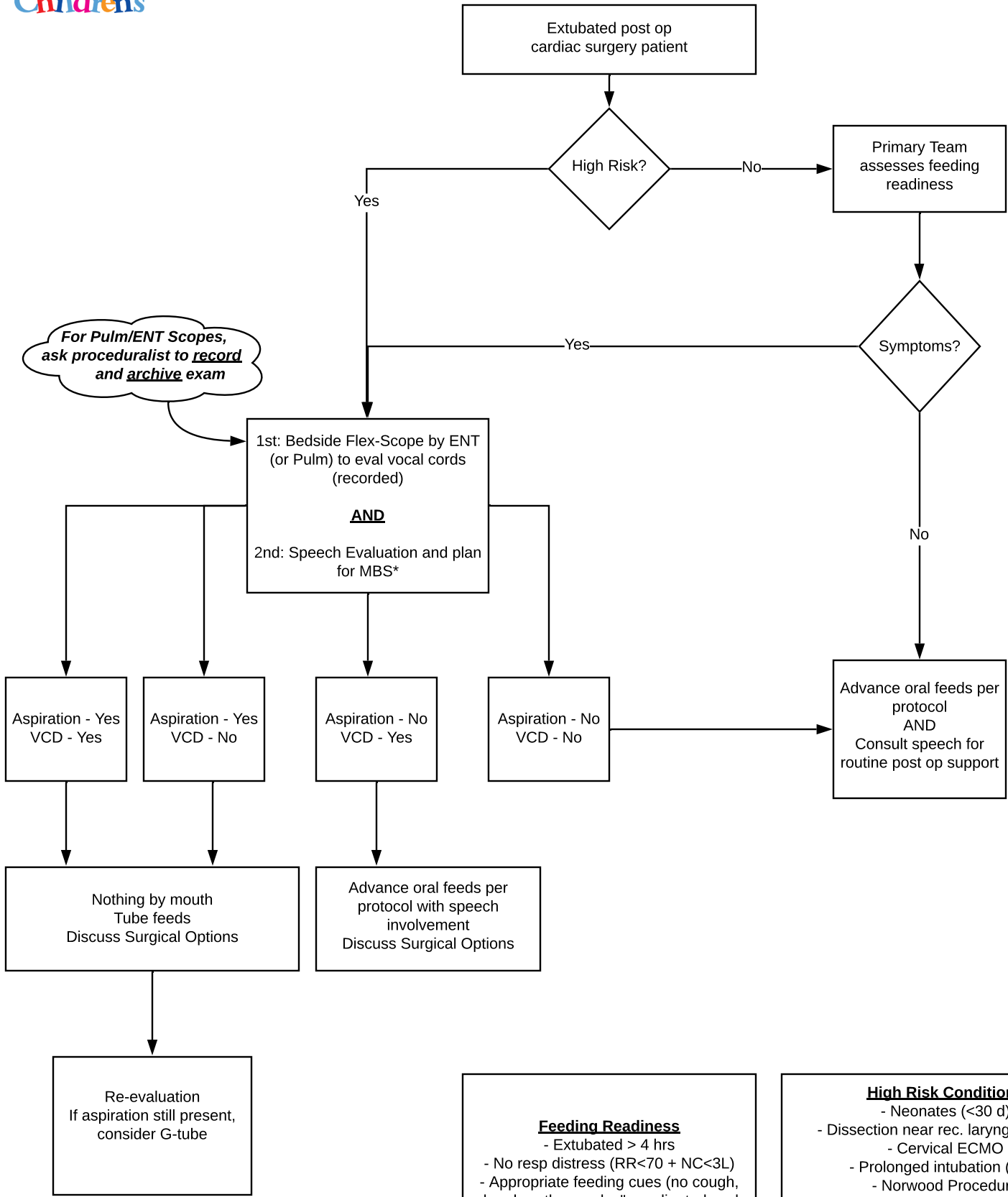


Guide for the aerodigestive evaluation and management of post operative pediatric cardiac surgery patients



***Notes**
Prioritize consults/studies for weekdays
Speech pager 123-8704 or Vocera

VCD = Vocal Cord Dysfunction
MBS = Modified Barium Swallow

Feeding Readiness

- Extubated > 4 hrs
- No resp distress (RR<70 + NC<3L)
- Appropriate feeding cues (no cough, clear breath sounds, "coordinated suck on paci, maintains saturations)
- Tolerating tube feeds

High Risk Conditions

- Neonates (<30 d)
- Dissection near rec. laryngeal nerve
- Cervical ECMO
- Prolonged intubation (>7d)
- Norwood Procedure
- Aortic Arch Repair by Median Sternotomy
- BTT-shunt placement
- Genetic syndrome (T21, 22q11 del, etc)
- Symptoms
- Attending Discretion