

EPI-NC NEWSLETTER



2024 FEP SYMPOSIUM RECAP

THANK YOU for making the 2024 FEP Symposium a hit! We enjoyed hearing from you all and hope you enjoyed yourself. Below you will find some helpful links from topics and opportunities from the Symposium

- [KEYNOTE SPEAKER ADDRESS AND POWERPOINT PRESENTATIONS](#)
- [SIGN UP FOR ADVISORY COUNCIL, IMPLEMENTATION WORKING GROUP, BLACK MULTI-FAMILY GROUP PLANNING TEAM](#)
- [EPI-NC LISTSERV SIGN UP](#)

SYMPOSIUM SURVEY FEEDBACK

66%

Of survey respondents found the activities relevant to their scope of work

85%

Of NC CSC providers attended the Symposium

100%

Of survey respondents strongly agree or somewhat agree that they were satisfied with the symposium

UPCOMING
PROJECT ECHO
SESSIONS

MAY 8TH

HARM REDUCTION
AND CANNABIS

JUNE 12TH

WORKING WITH
LATINE CLIENTS
WITH PSYCHOSIS

[CLICK HERE TO WATCH
PREVIOUS ECHOS](#)

"It was quite enjoyable and I appreciated the networking opportunities provided in addition to the well-organized presentations. A huge thank you to the EPI-NC team!"

"I enjoyed the guest speaker and the focus on inequity that she brought."

"Symposium was great, I greatly appreciated all of the topics and the opportunity to have time to strengthen bonds with my team"



EPI-NC
Early Psychosis Interventions
of North Carolina

EARLY PSYCHOSIS INTERVENTION ADVISORS OF NORTH CAROLINA WAS FOUNDED IN 2014 AND IS FUNDED BY FEDERAL COMMUNITY MENTAL HEALTH SERVICES BLOCK GRANT (CFDA #93.958). EPI-NC WORKS TO GUIDE AND ASSIST THE EXPANSION OF EARLY PSYCHOSIS SERVICES IN NORTH CAROLINA. EPI-NC HAS EXPANDED TO HELP SUPPORT THE DEVELOPMENT OF INNOVATIVE PROGRAMMING TO EXPAND AND IMPROVE CARE FOR THE EARLY PSYCHOSIS POPULATION.



NC DEPARTMENT OF
HEALTH AND
HUMAN SERVICES

NC HeAL UPDATES



NC HeAL Statistics

142

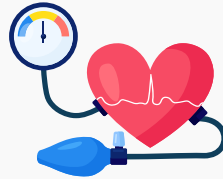
HEALTH COACHING
SESSIONS HELD

50

CLIENTS REFERRED,
REPRESENTING 4 CLINICS

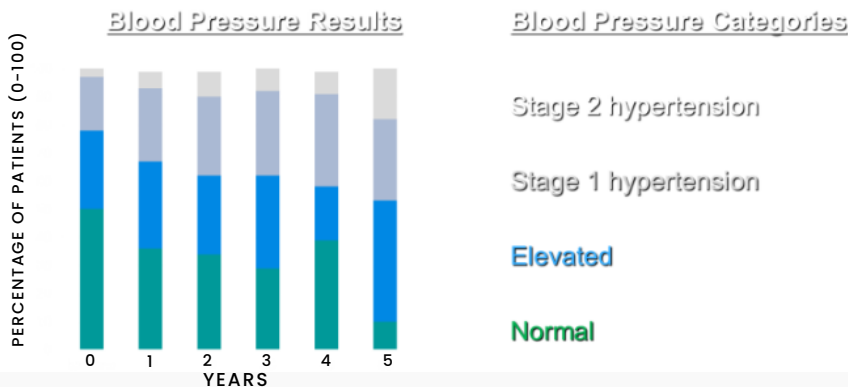
MAY IS BLOOD PRESSURE AWARENESS MONTH

- Elevated and high blood pressure is very common in our CSC clients



- All team members can help clients understand & manage their blood pressure

Combined Data: baseline to 5 years



FOR MORE PRACTICAL
INFORMATION CLICK
HERE TO REACH THE NC
HEAL HYPERTENSION
MANAGEMENT PAGE

E-PROMPT

We are excited to announce the launch of E-PROMPT, Early Psychosis Resources: One-on-One Mentoring and Professional Training



- E-PROMPT is a free education and mentoring resource available to any clinician in North Carolina interested in early psychosis care education.

- Clinicians can submit a question via our online form and a response will be received within 3-5 business days with resources and/or will prompt the clinician to set up a time to speak further if the question requires more than electronic resources.

QUESTIONS?

CONTACT KATIE BOYLE
(KAITLIN_BOYLE@MED.UNC.EDU) OR
CHRISTINA CRUZ
(CHRISTINA_CRUZ@MED.UNC.EDU) AND VISIT
OUR WEBSITE [GO.UNC.EDU/E-PROMPT](https://go.unc.edu/e-prompt)

- <https://go.unc.edu/EPROMPTQS> Or scan this QR Code



Share

WE HOPE YOU CONSIDER SHARING THIS RESOURCE WITH THE COMMUNITY CLINICIANS IN YOUR AREA!